

RPE MODEL RM-10 VALVE BAG FILLER

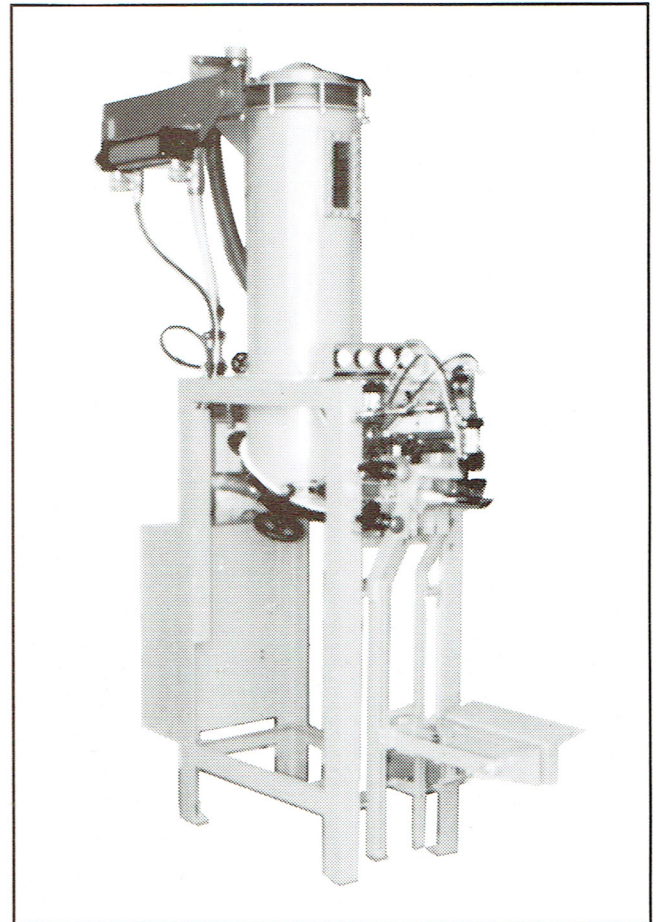
PNEUMATIC FLUIDIZING
TOP PRESSURE ASSIST

FEATURES

- FLUIDIZING OPTIONS TO SUIT YOUR PRODUCT
- PRESSURE ASSIST PRODUCT CHAMBER FOR IMPROVED CONTROL AND FASTER FILLING
- LOW PRESSURE BLOWER NOT REQUIRED FOR FINE POWDERS
- FULL FLEXURE MOUNTED WEIGHING MECHANISM FOR CONSISTENT SUPPORT THROUGH SCALE TRAVEL
- SCALE ASSEMBLY AND OPERATOR GAUGES MOUNTED AT FRONT OF BAGGER
- ALL PNEUMATIC EXPLOSION-PROOF CONTROLS STANDARD
- MODULAR DESIGN FOR EASY ADD-ON OF MULTIPLE UNITS

RPE MODEL RM-10 VALVE BAG FILLER

A simultaneous fill and gross weighing machine, the RM-10 is an efficient, fluidizing bagger incorporating a pressurized product chamber for improved product handling.



PRINCIPLES OF OPERATION

The heart of the bagger is a fluidizing hopper with a quick-drop plenum bottom and quick opening hopper outlet port. The air required to fluidize the product enters the plenum bottom and is dispersed through the porous fluidizing pad covering the plenum. The properly controlled fluidization air causes the product to flow freely from the hopper and into the bag.

The upper product chamber of the bagger uses a positive sealing butterfly type product infeed valve to close the top of the product chamber during the bag filling cycle. The chamber is then pressurized by means of either compressed (plant) air, or by a low pressure/high volume positive blower. This added pressurization means faster filling, tighter packed bags, and better weight accuracy.

SPECIFICATIONS

Height: 7' 9" Floor-to-Inlet (typical w/30" chamber)

Width: 19"

Depth: 82 $\frac{1}{2}$ "

Weight: Approximately 950 lbs.

Bag Weight Range: 20 to 120 lbs.

Air Requirement: Clean, dry, compressed air

CFM: 1 cu. ft./bag/min.

Pressure: 80 PSI (65 PSI min.)

SCALE AND WEIGHING MECHANISM

The weighing portion of the bagger, including the fill spout and bag saddle, is supported by flexure plates. The standard mechanical scale is a rugged, compact, entirely front mounted unit using only two inverted pivots and two beams. The bag weight is adjusted using counterweights within easy reach of the operator. Optional electronic weighing is available with several variations including two-stage filling, microcomputer control, and printer options.

CONSTRUCTION

The Model RM-10 uses a heavy duty, structural steel modular frame design, only 19" wide. Multiple units may be stationed side-by-side on any center line spacing to suit. Additional units may be added as your production requirements increase.

CONTROLS

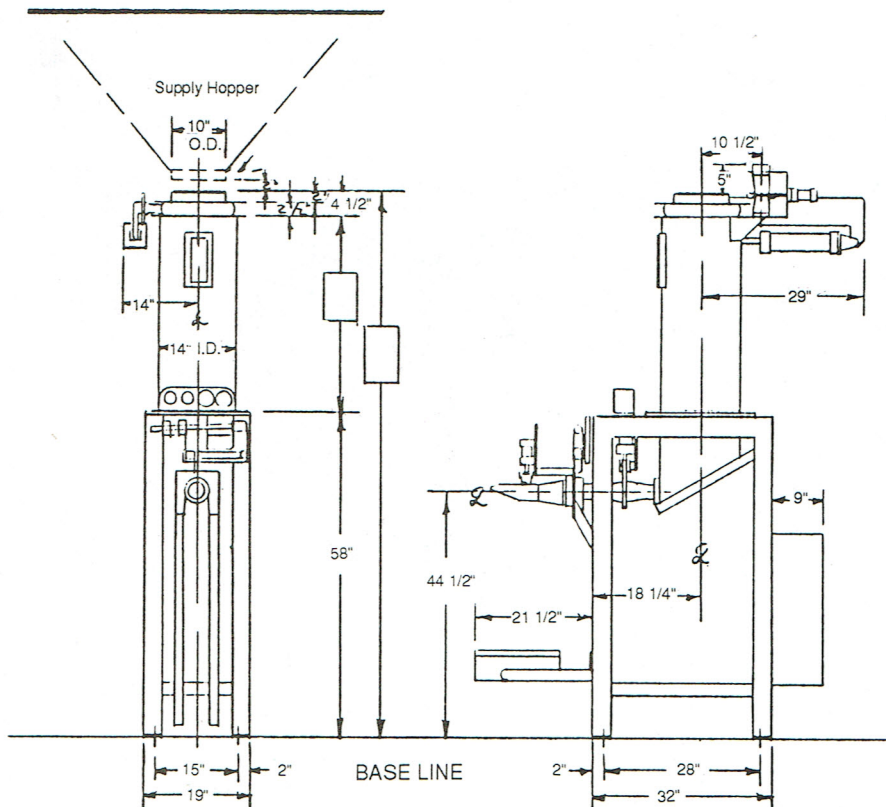
All pneumatic controls are standard, meeting explosion-proof installation. Electro-pneumatic controls are also available to interface with special circuitry requirements. Control components are mounted on a panel at the rear of the bagger and are protected by a lift-off cover for ease of access.

OPTIONS

- Automatic start, bag discharge, fill tube purge, product sampling
- Custom fill spouts, air alleviating spouts, replaceable liner spouts
- Drum & pail filling attachments
- Stainless steel facings, special finishes
- Dust pick-up hoods to suit requirements
- Special dimensions to suit your installations

EACH MACHINE WE MANUFACTURE IS CUSTOM BUILT TO YOUR REQUIREMENTS.
PLEASE CONTACT US TO DISCUSS YOUR APPLICATION IN DETAIL

DIMENSIONS



**ROBEY PACKAGING EQUIPMENT
& SERVICE, INC.**

3236 Rennie Smith Drive
South Chicago Heights, IL 60411

Phone: 708-758-8250
Fax: 708-758-8252